

Renmore Pitch (Melody's Field) Floodlighting

Part 8 Planning Report

June 2025



Table of Contents

1. Introduction	3
1.1 Project Background	3
2. List of Planning Documents submitted as part of Application.....	5
3. Site Planning History.....	6
4. Environmental Impact	6
4.1 Appropriate Assessment Screening.....	6
4.2 Ecological Impact Assessment	6
5. Planning Policy Context.....	6
5.1 Galway City Development Plan 2023 - 2029	7
5.1.1 Zoning Objectives.....	7
5.1.2 Policy.....	8
5.1.3 Specific Objectives	9
5.2 Galway City Council Recreation and Amenity Needs Study (2008).....	9
5.3 National Sports Policy 2018 – 2027	9
5.4 Consistency with Planning Policy	9
6. Floodlighting Design	10
6.1 Design Standards	10
6.2 Light Spill	11
6.3 Floodlight Operation	11
6.4 Connection to Electricity Grid	11
7. Summary & Conclusions.....	12
Appendix A – Mini Pillar Details.....	13

1. Introduction

Galway City Council is seeking planning permission, under Part XI of the Planning & Development Acts 2000 (as amended) and Part 8 of the Planning & Development Regulations 2001 (as amended), for the proposed installation of 12 no. floodlights at Renmore Pitch (Melody’s Field), Renmore (in the townland of Renmore), Galway.

The purpose of this report is to describe in detail all relevant aspects of the proposed development and to demonstrate its conformance with the policies, objectives and standards of the Galway City Development Plan 2023-2029 and consistency with the proper planning and sustainable development of the area.

1.1 Project Background

Renmore Pitch (Melody’s Field) is an existing sports facility situated in Renmore (Figure 1.1). The site is located at the rear of the Renmore Community Centre and Kingfisher Leisure Centre and can be accessed via Melody Court and the Leisure Centre access on Renmore Avenue. The pitch is a public pitch with unrestricted access to the public at all times throughout the day and it serves as a key venue for Renmore Association football Club for training and matches.



Figure 1.1: Aerial image of site (site outlined in red)

The pitch is a very popular amenity and provides a social outlet for people in the locality and is also regularly used by the local school. However, due to the lack of floodlighting, use of the pitch is curtailed to daylight hours only. This significantly reduces the availability of the pitch for use, particularly during the winter period when darkness can set in as early as 4:15pm. In order to increase availability of the pitches for use, it is proposed to install floodlighting around the perimeter of the pitches.

The proposed development will consist of the following:

- Erection of 12no. LED floodlight luminaires mounted on 6no. lighting columns (15m height) positioned around the perimeter of the pitch.
- Laying of approx. 400m of underground electrical cables, including connection to electrical grid.
- Installation of an above-ground three phase metered pillar cabinet structure (refer to Appendix A for details).
- Installation of an above-ground Distribution Pillar Double Door to house lighting controls (refer to Appendix A for details).

2. List of Planning Documents submitted as part of Application

The following documentation is enclosed in relation to this application:

- 1no. copy of site notice (5no. originals on site)
- 1no. copy of photographs of 5no. site notices as erected
- 1no. copy of original full page of newspaper notice
- 1no. copy of the following drawings:
 - PKS24-09-001 – Site Location Map
 - PKS24-09-002 – Site Layout
 - PKS24-09-003 – Proposed Lighting Layout
- 1no. copy of the following technical reports:
 - Planning Report (this report)
 - Appropriate Assessment Screening Report
 - Ecological Impact Assessment Report
 - Lighting Design Report

3. Site Planning History

A review of previous planning applications in relation to the Renmore Pitch (Melody's Field) was carried out using Galway City Council's search facility. No previous planning applications were found in relation to Melody's Field.

4. Environmental Impact

4.1 Appropriate Assessment Screening

An appropriate assessment (AA) screening was undertaken for the proposed development and is enclosed with this planning application. The AA screening conclusion of this screening exercise is that no significant effects are expected on the qualifying interests or conservation objectives of the Galway Bay Natura 2000 sites, as a result of the proposed development in question, alone or in combination with other plans and projects in the area, and therefore that a Natura Impact Statement is not required in this case.

4.2 Ecological Impact Assessment

An Ecological Impact Assessment (EclA) was undertaken for the proposed development and is enclosed with this planning application. The EclA concludes the following:

- Habitats within the site are of extremely limited ecological value comprised of amenity grassland.
- A number of designated sites of natural heritage importance are present within relative proximity to the site, including the Inner Galway Bay SPA. Impacts on both designated sites, species and local biodiversity has been assessed with no significant impacts expected.
- It is considered that the proposed development will have no significant residual impacts on local biodiversity.

5. Planning Policy Context

The current statutory planning policy document for the subject lands is the Galway City Development Plan 2023 – 2029 (GCDP). There are a number of other relevant policy documents that inform the GCDP.

5.1 Galway City Development Plan 2023 - 2029

5.1.1 Zoning Objectives

The Renmore Pitch (Melody's Field) site is zoned Recreational and Amenity in the GCDP as indicated in Figure 5.1 below.



Figure 5.1: Extract from Galway City Development Plan 2023-2029 Land Zoning Map (site outlined in red)

The development plan outlines examples of the types of development that are compatible with the zoning objective and outlined in Table 5.1 (extract from GCDP, '11.2.2 Natural Heritage, Recreation and Amenity RA Land Use Zoning Objectives').

Table 5.1: Examples of types of development compatible with RA zoning objective

Zoning Objective RA	
To provide for and protect recreational uses, open space, amenity uses, natural heritage and biodiversity.	
Uses which are compatible with and contribute to the zoning objective, for example:	- Outdoor recreation
Uses which may contribute to the zoning objectives, dependent on the RA location and scale of development, for example:	- Development of buildings of a recreational, cultural or educational nature or car parking areas related to and secondary to the primary use of land/water body for outdoor recreation - Public utilities - Burial grounds and associated services

5.1.2 Policy

Chapter 5 of the GCDP sets out policy relating to recreation and amenity under Policy 5.1 – ‘*Green Network and Biodiversity*’ and includes the following:

- Support sustainable use and management of areas of ecological importance, parks and recreation amenity areas and facilities through an integrated green network policy approach in line with the Galway Recreation and Amenity Needs Study and where superseded by the Green Space Strategy, where it can be demonstrated that there will be no adverse impacts on the integrity of European sites.
- Achieve a sustainable balance between meeting future recreational needs (both passive and active) and the preservation of the city’s biodiversity and ecological and cultural heritage.
- Improve accessibility to the City Parks, recreation and amenity areas and facilities and include for sustainable modes of transport, where appropriate.
- Retain, extend and enhance opportunities for recreation within the green network for all members of the community including people with disabilities.
- Ensure that all passive and active recreational proposals are considered in the context of potential impact on the environment, sites of ecological and biodiversity importance and general amenity.
- Support the actions of the National Physical Activity Plan (DH, 2021) and National Sports Policy 2018-2027 (DTTS, 2018).

Chapter 9 of the GCDP sets out policy relating to lighting design under Policy 5.1 – ‘*Light Pollution*’ and includes the following:

- Ensure the design of external lighting minimises the incidence of light pollution, glare and spillage into the surrounding environment and has due regard to the visual and residential amenities of surrounding areas.
- Require all new developments to be designed with the inclusion of energy efficient lighting schemes
- Lighting on linear infrastructure, including greenways and blueways, should be carefully managed to ensure coherence of the supporting habitats of European sites, as outlined in article 10 of the Habitats Directive.
- Ensure the design of external lighting does not have an adverse impact on wildlife and ecosystems and encourage the use of dark zones and sensor lighting where feasible.

5.1.3 Specific Objectives

There are no specific objectives identified regarding this site in the GCDP.

5.2 Galway City Council Recreation and Amenity Needs Study (2008)

The Galway City Council Recreation and Amenity Needs Study (2008) (RANS), under Section 6.4.2, acknowledges the importance of broadening the availability of existing pitch facilities by providing floodlighting in order to alleviate over-usage and, hence, maintenance issues. The following specific policies are included in the RANS:

- **Policy SF2:** Explore options for diversifying and broadening sporting opportunities/ activities through the provision of a greater range of facilities and amenities within parks.
- **Policy SF3:** Promote accessibility for all to recreational facilities.

5.3 National Sports Policy 2018 – 2027

The National Sports Policy 2018 – 2027 sets out the government of Ireland’s strategy for delivering objectives related to the development and promotion of sports in Ireland up to 2027. Relevant actions included in the plan include the following:

- **Action 22:** We will encourage Local Authorities to promote and facilitate more sharing of facilities locally, especially where capacity is available at off-peak times during the day, in the evening or during holiday periods in the case of educational establishments. This will involve working closely with clubs and sporting bodies, schools and colleges, leisure facility providers and others. As part of the Local Sport Plans, Local Authorities will also lead on other collaborative initiatives to improve access locally e.g. Local Authorities and LSPs will combine to see how recreational areas can be utilised more fully by local communities for sport and physical activity e.g. for parkruns.

5.4 Consistency with Planning Policy

As evidenced by the above information, the proposed development is consistent with the zoning objectives for the area and complies with policy set out in Chapter 5 of GCDP. The proposed floodlighting has been designed in accordance with the requirements set out in Chapter 9 of GCDP and has undergone appropriate assessment screening in accordance with the Habitats Directive (refer to Sections 4 for further details).

The proposed development supports policy and objectives set out in Galway City Council’s RANS (2008). In a national context, the proposed development is consistent with actions set out in the National Sports Policy 2018 – 2027.

6. Floodlighting Design

A lighting design report prepared by Electric Skyline Ltd. is included separately with this planning application. The proposed sports lighting system will entail the erection of 12no. LED floodlight luminaires mounted on 6no. lighting columns (2no. luminaires/column) positioned around the perimeter of the pitch. Each lighting column will be 15m in height above ground level. Galway City Council will ensure that floodlights are installed and commissioned by suitability qualified contractor and inspected and signed off by a suitability qualified specialist in accordance with the lighting design report.

6.1 Design Standards

The proposed floodlighting has been designed to meet club competition (Class II) standard in accordance with EN 12193:2018 – ‘Light and lighting - Sports lighting’ (Table 6.1). As presented in the lighting design report, the proposed lighting design yields the horizontal illuminance results as outlined in Table 6.2 below.

Table 6.1: EN12193:2018 – lighting design standards (soccer)

Class	Horizontal illuminance	
	E_{hor} Ave lx	$U2_{hor}$
I	500	0,70
II	200	0,60
III	75	0,50

Table 6.2: Illuminance standard of proposed floodlighting

Horizontal Illuminance	Uniformity		Colour Properties of Lamps	
E_h ave. (lux)	U1 Emin./Emax.	U2 Emin./Eave	Colour Temperature Tk (K)	Colour Rendering Ra
263	0.41	0.71	>4000	>70

6.2 Light Spill

Light spill is almost entirely confined to within the recreation and amenity zoned lands, with some very minor levels of spill (circa 50 lumens) reaching the Ballyloughane Road (east of the site) and residential zoned lands (currently a disused commercial premises) north of the site. There will be no light spill to the existing residential properties either south of the site or east of the site (across the Ballyloughane Road).

6.3 Floodlight Operation

The floodlights will be activated from a keyed control box located adjacent to the Renmore AFC clubhouse west of the pitch. The floodlights will only be in use periodically between the hours of 4pm to 10pm from the months of September to April inclusive (thus outside the main active periods for bats).

6.4 Connection to Electricity Grid

In order to provide electricity supply to the floodlights it will be necessary to lay circa 400m of underground electrical cables around the perimeter of the pitches and make a connection to the electrical grid at the existing ESB pillar, located south of the pitch. The ducting will primarily be laid in grassed areas. Care will be taken to avoid any impact on existing trees in the park and all surfaces will be fully reinstated on completion of the works.

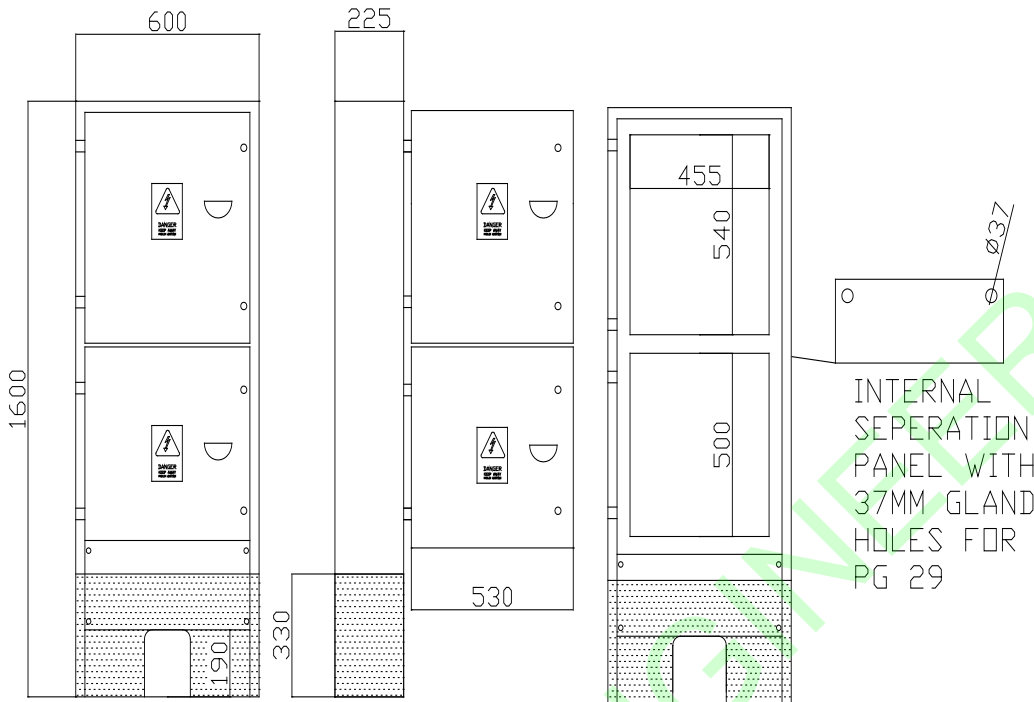
7. Summary & Conclusions

It is submitted that the proposed development fully accords with the proper planning and development of the area while providing a significant recreation and amenity gain for the citizens of Galway City for the following reasons:

1. The proposed development is consistent with the zoning objectives and policies of the GCDP and prevailing local and national policy.
2. The proposed development will provide a significant amenity benefit, increasing the window of availability of the football pitch by approximately 25% over the course of a year.
3. The floodlights will not impact nearby residential areas with lighting spill and the lights will only be operational between the hours of 4pm and 10pm.
4. An AA screening concluded the proposed development would have no potential to impact on Annex I habitats or Annex II species associated with nearby European Sites.
5. An ecological impact assessment concluded that habitats within the site are of extremely limited ecological value comprised of amenity grassland and it is considered that the proposed development will have no significant residual impacts on local biodiversity

Appendix A
Millar Pillar Details

THREE/SINGLE PHASED METERED PILLAR 1600 SPLIT DOOR



Three/Single phased metered pillar is constructed from 3mm sheet steel.

The pillar is fitted with two hinged fully removable lockable doors.

Hinges are manufactured from solid stainless steel blocks.

Tri-head tamper proof locks fitted as standard.

Pillar comes complete with rubber gasket door seal. And has IP44 rating.

Earth lead connections supplied from pillar body to doors.

Pillar is galvanised internally and externally to BS EN 1461.

Backboard made from 12mm thick exterior grade plywood, treated with low flame spread wood preservative and can be removed for wiring.

Bitumen paint is applied externally on the planting depth for protection.

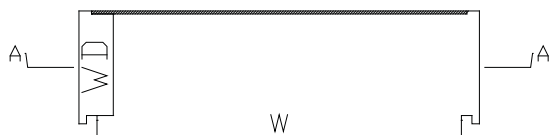
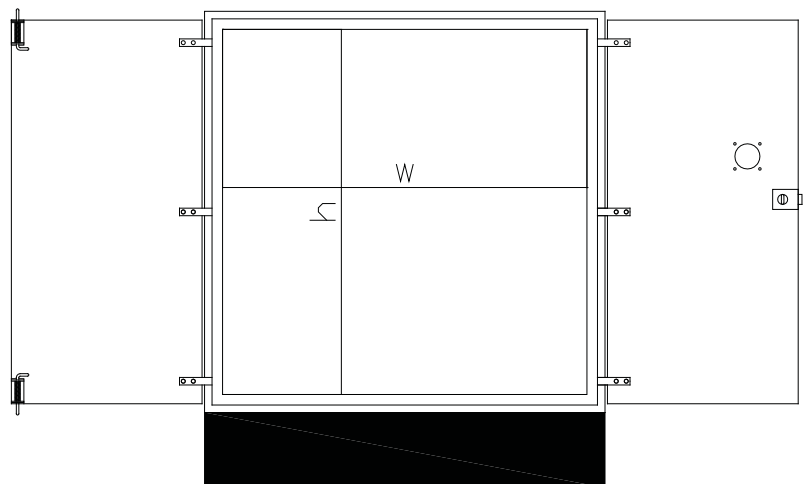
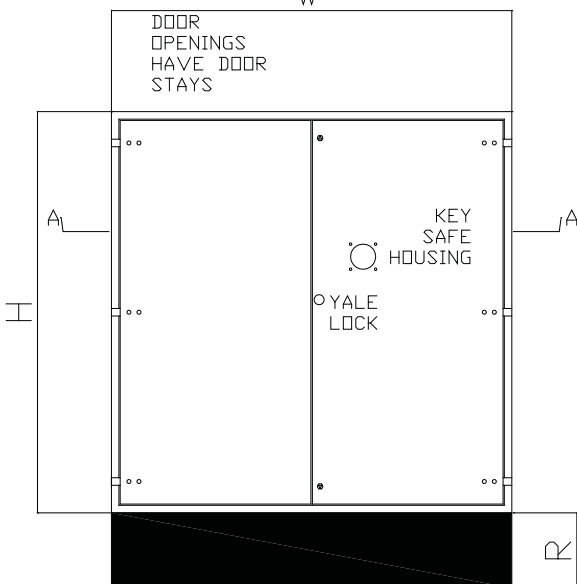
Two separate compartments: top section - ESB meter; base section - contractor connections.

Danger warning label fitted to doors.





DISTRIBUTION PILLARS DOUBLE DOOR



REFERENCE		EXTERNAL DIMENSIONS MM				WORKING DEPTH	DOOR APERTURE		WEIGHT
DESCRIPTION	CODE	H	W	D	R	WD	h	w	KG
Double door	PD1.25X1.25X.45	1250	1250	450	300	405	1056	1100	165
Double door	PD1.6X1.6X.45	1600	1600	450	300	405	1456	1456	270
Double door	PD2X1.6X.45	1600	2000	450	300	405	1456	1856	290