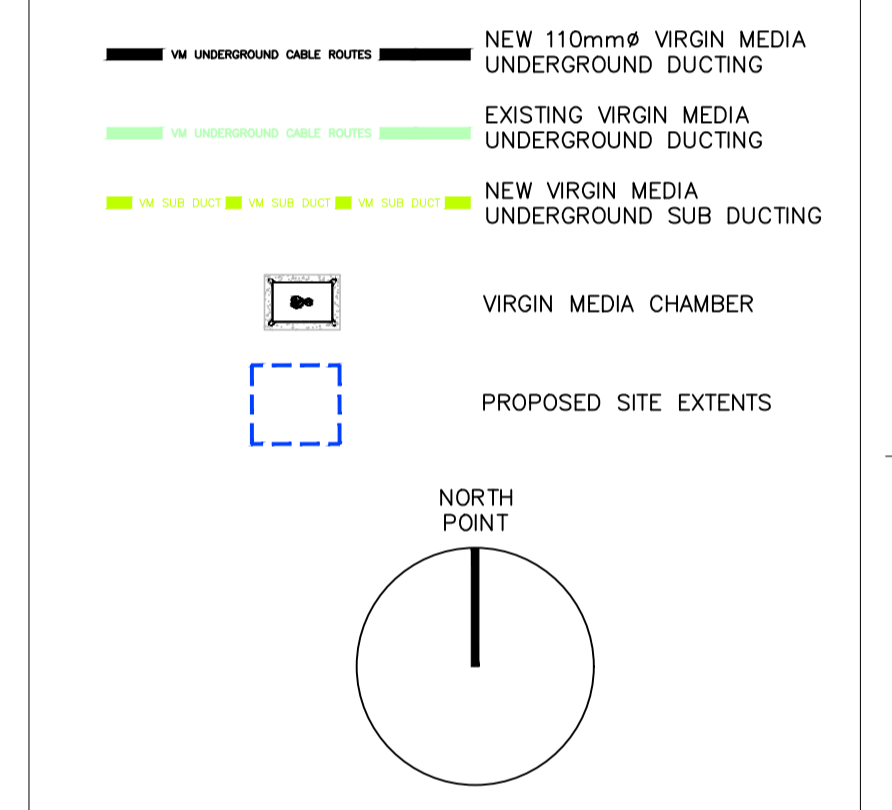


- General Notes**
- DO NOT SCALE FROM THIS DRAWING. WORK ONLY FROM FIGURED DIMENSIONS.
  - ALL ERRORS & OMISSIONS TO BE REPORTED TO THE CONSULTING ENGINEER
  - THIS DRAWING IS TO BE READ IN CONJUNCTION WITH ARCHITECTS AND STRUCTURAL ENGINEERS DRAWINGS.
  - REFER TO DOCUMENT REGISTER FOR DESCRIPTION OF STATUS CODES.

- NOTES**
- THIS DRAWING SHALL BE READ IN CONJUNCTION WITH ALL OTHER RELEVANT DRAWINGS & CONTRACT DOCUMENTS.
  - THE CONTRACTOR IS TO ALLOW FOR THE SUPPLY AND INSTALLATION OF ACCESS CHAMBERS ON DUCTING IN ACCORDANCE WITH VIRGIN SPECIFICATION.
  - THE MECHANICAL & ELECTRICAL CONTRACTORS SHALL BE RESPONSIBLE FOR THE CO-ORDINATION OF ALL UNDERGROUND SERVICES IN CONJUNCTION WITH THE MAIN CONTRACTOR.
  - ALL VIRGIN DUCTING TO BE LOCATED IN FOOTPATHS & SOFT LANDSCAPING.
  - GENERALLY, VIRGIN SUPPLY ALL OF THE EQUIPMENT NEEDED FOR THE INSTALLATION OF VIRGIN NETWORK FOR THE DEVELOPMENT - DUCT, CHAMBER COVERS, CABINETS, ETU'S, TAP ENCLOSURES, OUTLET BOXES, INTERNAL 'TRIPLE SCREENED' COAX CABLE.
  - VIRGIN SHALL APPROVE ALL COVERS IN ACCORDANCE WITH COMPANY STANDARD NATIONWIDE.
  - ALL CHAMBERS SHALL HAVE A CONCRETE FOUNDATION.
  - ACTUAL DIMENSIONS MAY VARY WITHIN THE CHAMBER DUE TO EXISTING CONDITIONS. ALL VARIATIONS TO BE APPROVED BY VIRGIN.
  - ALL CHAMBERS TO HAVE DRAINAGE SUMP WITH SUITABLE FLOOR GRADIENT.
  - DISTANCE BETWEEN DUCTS TO BE 25mm HORIZONTALLY & VERTICALLY.
  - MINIMUM OF 450/500mm COVER ON DUCT IN FOOTWAY & MINIMUM OF 750mm COVER ON DUCTS LOCATED IN CARRIAGEWAYS UNLESS OTHERWISE SPECIFIED BY LOCAL AUTHORITY.
  - FINAL F/W REINSTATEMENT SLAB TO BE SEPARATE FROM CHAMBER CONCRETE.
  - AT ALL TIMES THE CONTRACTOR IS TO BE AWARE OF THE PRESENCE OF EXISTING UNDERGROUND SERVICES IN THE VICINITY OF THE SITE.
  - REFER TO INDIVIDUAL HOUSE LAYOUT DRAWINGS FOR EXACT METER/ETU LOCATIONS



Rev	Status	Date	Description	D.E.
P01	S5	Dec '22	Issue For Part VIII	C.MD
P03	S2	July '22	Stage 2	C.MD
P02	S2	Mar '22	Issue For Information	C.MD
P01	S2	Dec '21	Issue For Information	C.MD

Revision	Project Drawing Reference		
<b>P01</b>	<b>21798-VCE-XX-XX-DR-E-1002</b>		
Status	Varming Project Number		
<b>S5</b>	<b>21798</b>		
Date	Checked By	Drawn By	Scale
DEC '21	J.G.	C.MD	1:250 @ A1

Client  
**GALWAY CITY COUNCIL**  
 CITY HALL, COLLEGE ROAD, GALWAY CITY, H91 X4K8

Project Title  
**DAY CENTRE FACILITIES AND EMERGENCY TEMPORARY HOMELESS ACCOMODATION SEAMUS QUIRKE ROAD, GALWAY CITY**

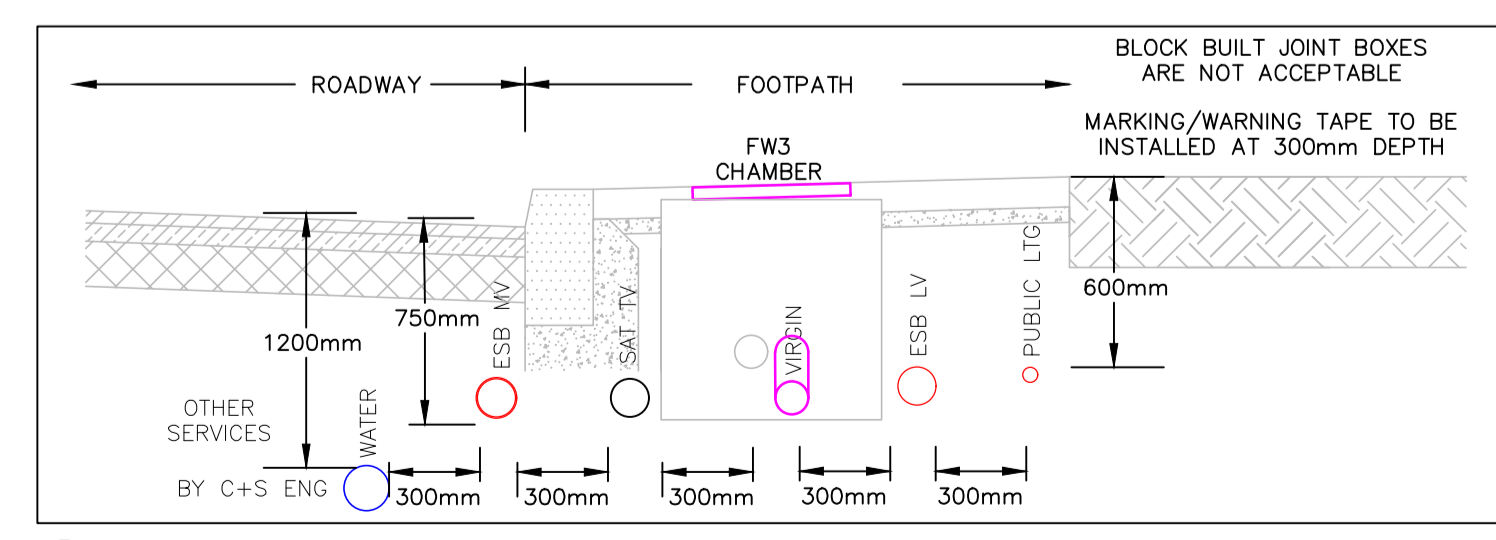
Drawing Title  
**ELECTRICAL SERVICES PROPOSED UTILITY SERVICES INFRASTRUCTURE VIRGIN MEDIA LAYOUT**



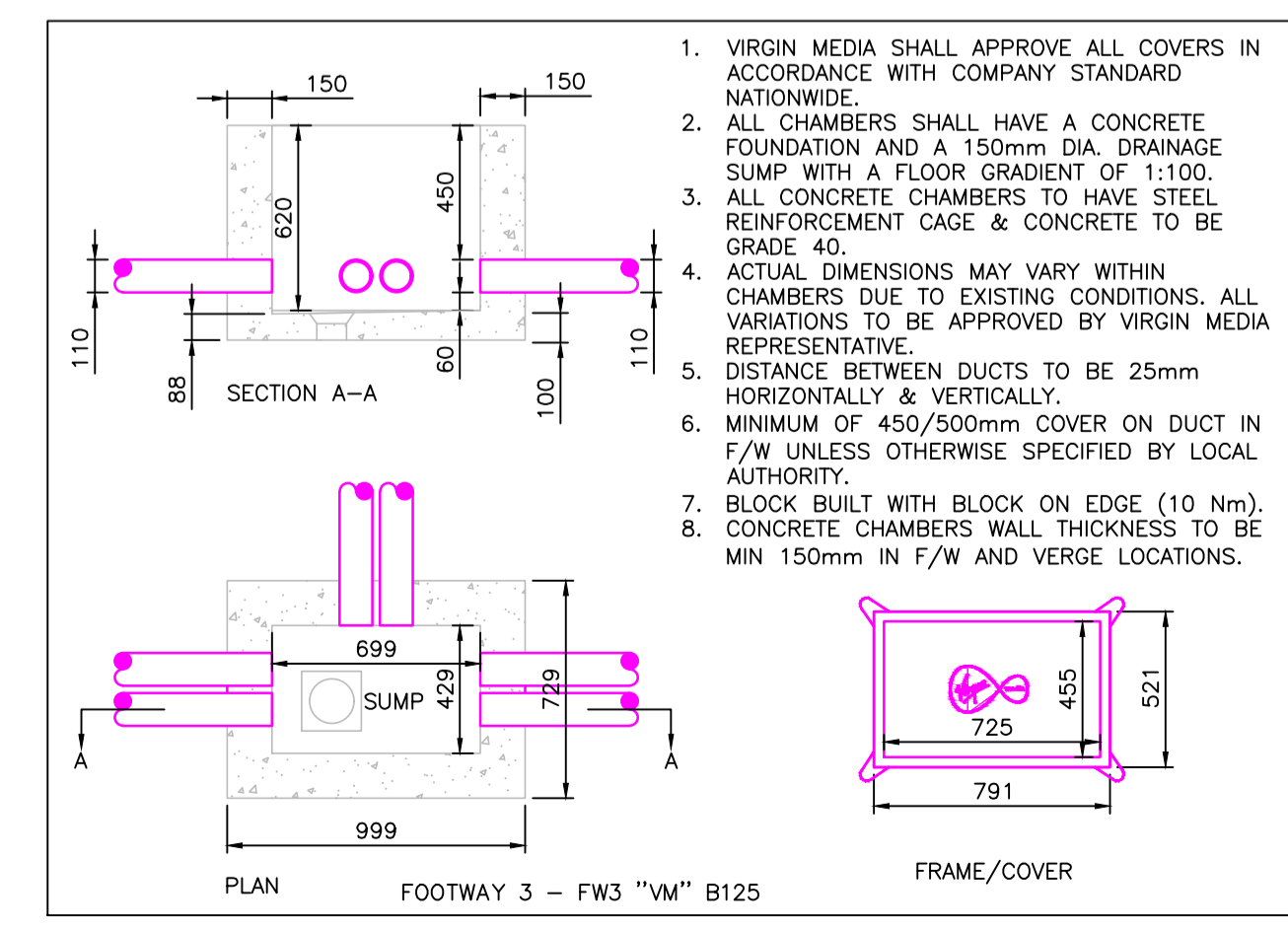
Dublin 01 4872300  
 Cork 021 2375080  
 Roscommon 090 6602380  
 Website www.varming.ie

IRELAND ENGINEERS IRELAND IHEEM  
 REGISTERED MEMBER  
 ISO 9001:2015 CERTIFIED  
 ISO 14001:2015 CERTIFIED  
 ISO 45001:2018 CERTIFIED

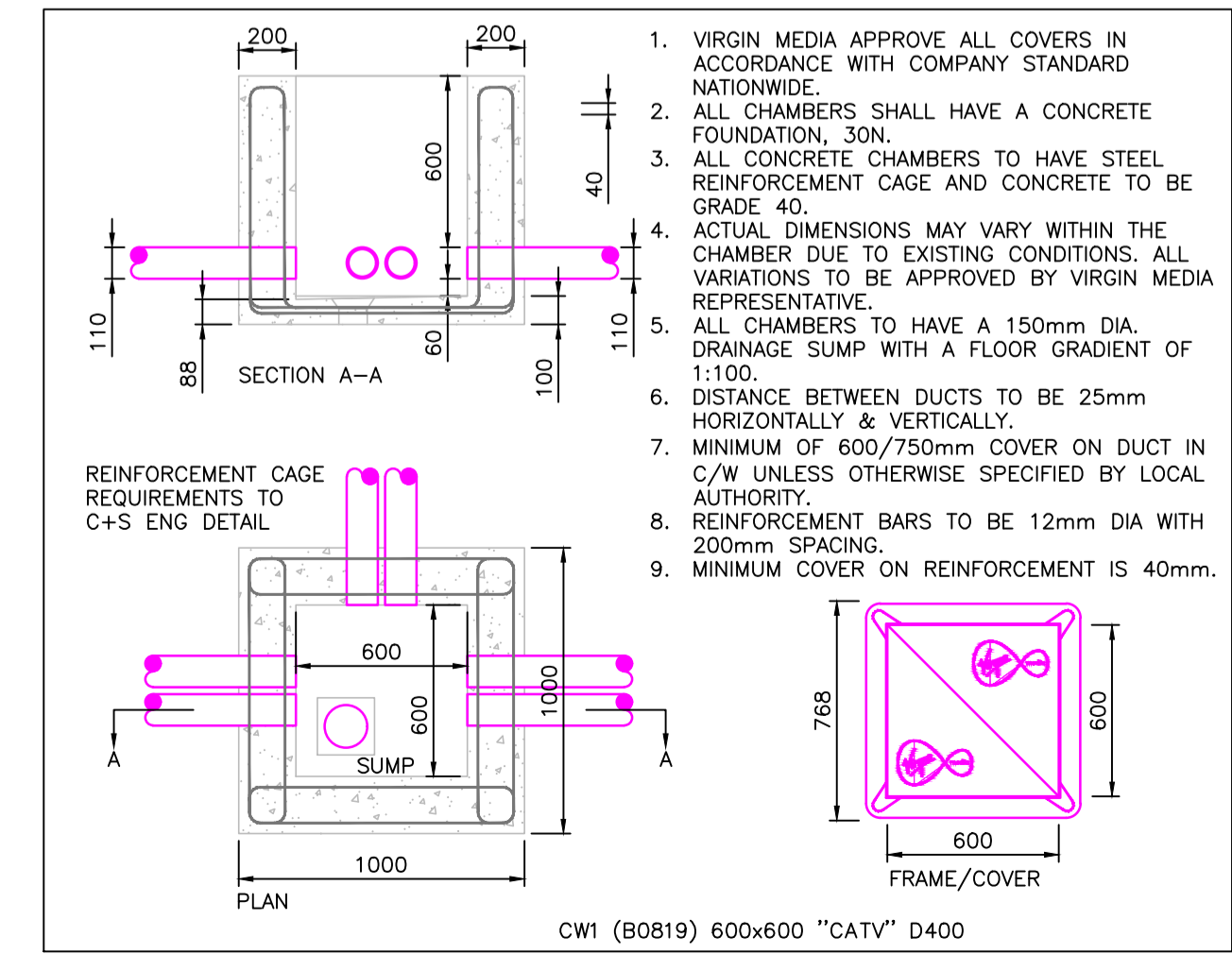
Engineering for the Future



TYPICAL CROSS SECTION OF UNDERGROUND SERVICES AT VIRGIN MEDIA FOOTWAY CHAMBER N.T.S. (A1)



FW3 (FOOTWAY 3) - CHAMBER, FRAME & COVER N.T.S. (A1)



CW1 (CARRIAGEWAY 1) - CHAMBER, FRAME & COVER N.T.S. (A1)