

Rev. no.	Rev. description	Date	Sign	Chk'd

Legend

- Site Boundary
- Recessed kerbing shown thus slip form concrete kerbs see Engineers drawings.
- Thermoplastic paint line markings to delineate parking spaces on Bitmac road surfaces, see engineers drawings.
- Proposed root barrier 600mm depth, installed with ribs facing the planting. Re-Root600, by Greenleafireland or similar approved
- Proposed low stone walls. 600mm high rubble stone reused from site
- Tactile paving for stepped, ramped change in levels to be Corduroy beige by Kilsaran (or similar approved) to comply current Part M&K of the Building Regulations. Paving laid to manufactures instructions.
- Basketball court modular floor tiles system by networksports.ie or similar approved laid to manufacturer specification
- Ballylusk fines 50mm, rolled in 2 layers as per manufacture specifications
- Permeable Gravel between parking
- Washed Ballylusk 6-20mm gravel for large format honeycomb gravel stabiliser grids with golden coloured angular graded gravel, Core Gravel by Roadstone or similar approved, laid to manufactures instructions.
- Home Zones
- Buff coloured SMA (Stone Mastic Asphalt)
- Pixel plaza
- Precast concrete paving sets 60mm depth in mixed colour finish. Fusion by Tobermore in silver, mid grey and noir or similar approved. Laid to manufacturers instructions and see Engineers details for build up.
- Small plazas
- Precast concrete paving sets 60mm depth in mixed colour finish. Shannon by Tobermore or similar approved. Laid to manufacturers instructions and see Engineers details for build up.
- Play Areas surfaces - Play bark Mulch Safety Surfacing (Brown) by Kompan or similar approved. Laid to manufacturers instructions and see Engineers details for build up. For play equipment see drawing no P423-105
- Rewilded Area
- No disruption of top soil during construction work.
- No additional top soil to proposed wildflower meadows areas. Very little disturbance during construction, see also detail sheet
- 75mm quality nutrient rich topsoil to LA approval, appropriate for public lawns.
- 150mm quality nutrient rich topsoil to LA approval, appropriate for private lawns.
- 350mm quality nutrient rich topsoil to LA approval to private front gardens, gravel mulch on completion.
- 400mm quality nutrient rich topsoil to LA approval, appropriate for shrub and perennial planting, bark mulch on completion.
- 600mm quality nutrient rich topsoil to LA approval, appropriate for hedges, bark mulch on completion.
- Proposed 1.8m high concrete wall with concrete precast capping
- Proposed 1.8m high concrete post and timber panel fencing with concrete plinth to base, castle fencing with matching gates by abwood.ie or similar approved
- Proposed 3m high walled mesh powdercoated black fencing to basketball court.
- Provisionary lamp posts locations, (supplied by GCC arch. dept.)
- 3no. Agora Galvanised Picnic Bench & Table Set by Kompan or similar approved and fitted by supplier to manufactures instructions.
- 1 no. Drifter Bench with one slat and supports are made of hot-dip galvanized steel by Streetlife or similar approved
- Tree pit detail gravel mulch on completion, include for CU soil by Landech soils or similar approved, see drawing P423-108 for further information.
- Large tree pit detail 2mØ sterilised bark mulch to bas, see drawing P423-108 for further information.
- Small tree pit detail, 1m Ø bark mulch to base, see drawing P423-108 for further information.
- 3no locations for planters with low Limestone walls made of stone reclaimed from site.
- Proposed Earth mounding approx. 500mm in height, gradients not exceeding 1:3 for ease of maintenance. To be marked out by LA on site
- Concrete furniture:
- 2no. Canterbury Triangle Seating by CassidyBrothers
- 4no. Pembroke Bench by CassidyBrothers
- 2no. Star bench by Killeshal
- Bike stands locations- 13 no HC2089 Cycle Stands by Hartecast, each stand would cater for 2 bikes (26no. spaces in total)
- Secure bike shelter- 14 no. bike spaces eg. Mesh Bike Shelter by Cyclehoop or similar approved

Notes:
 For tree removal see Softworks Plan and Arborcare tree report and drawings.
 For extent of boundary treatments and other retaining walls also road and parking surfaces including linemarking and signage see engineers drawings.
 This drawing is to be read in conjunction with drawings no P423-101 to P423-108 inclusive, Arboricultural Impact Assessment Report 24-09-2020 with accompanying Tree Protection Plan for protection measures during construction by Arborcare and all architects and engineers drawings.
 For public roads footpaths and parking spaces see engineers drawings for proposed surface treatments. Including tarmac, cast in situ concrete and concrete block permeable paving.

Client: **Galway County Council**
 Project: **Housing Development at Merlin Park Galway**

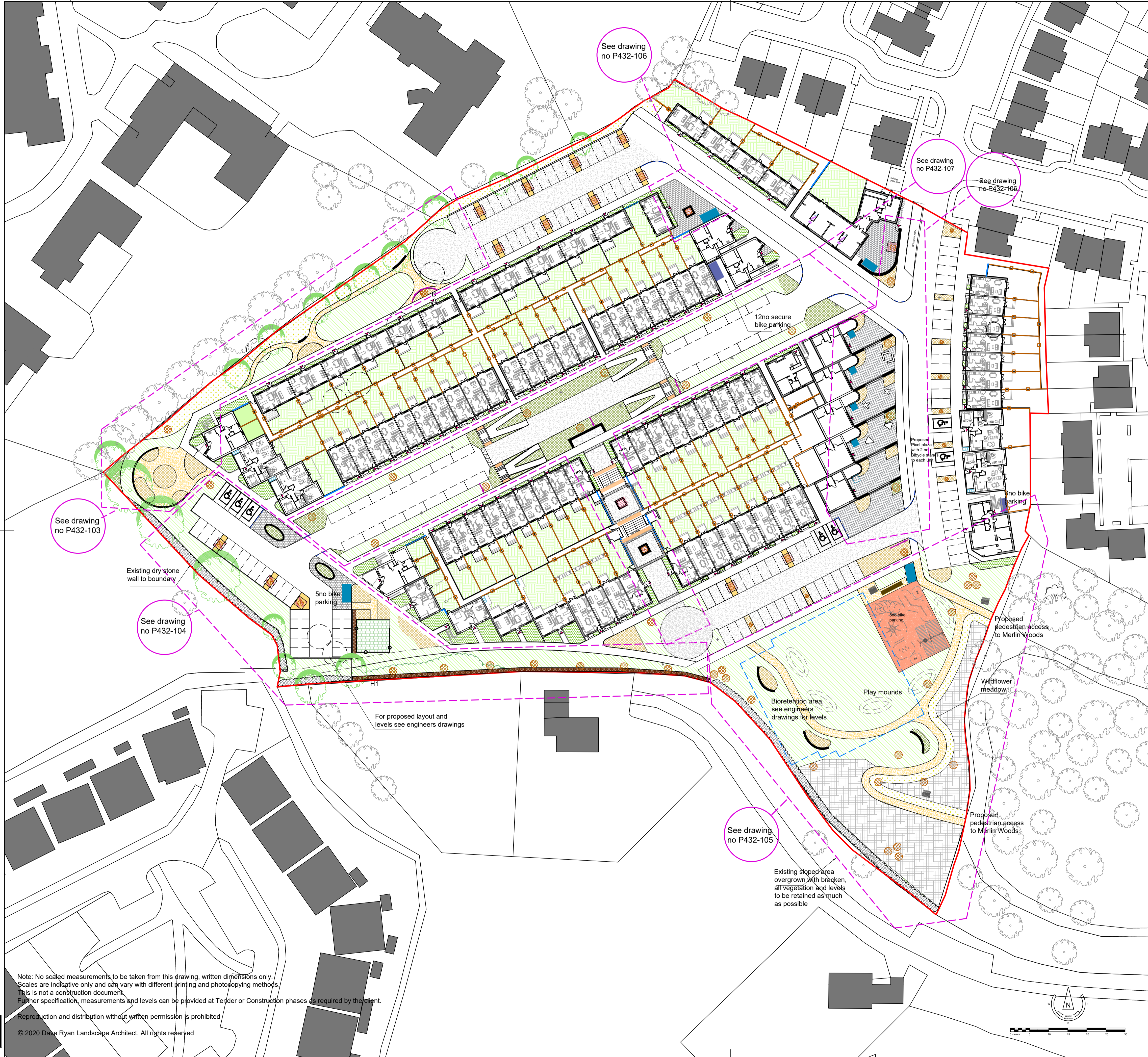
Drp Title: **Landscape Hardworks Plan**
 Stage: **Planning Stage (Part VIII)**

Drp. No.: **P423-102**
 Scale: **1:500 @ A1**
 Date: **2021, June 4th**

12 Barrington Street
 Limerick
 www.daveryan.ie

Tel.: 061 59 00 01
 Mob.: 087 314 52 70
 Email: info@daveryan.ie

Drwn By: **MT** Checked by: **DR**



Registered Landscape Architect
 FILE: D:\DAVE RYAN\DAVE RYAN - 423 MERLIN PARK GALWAY\TYT\CONCIL\2021-06-04-PLANNING\PART 8\SSUE\WORKING\423-022DWG_PLOTTED_06/2021_2147_BY USER: MABARNA
 © 2020 Dave Ryan Landscape Architect. All rights reserved.

Note: No scaled measurements to be taken from this drawing, written dimensions only. Scales are indicative only and can vary with different printing and photocopying methods. This is not a construction document. Further specification, measurements and levels can be provided at Tender or Construction phases as required by the client. Reproduction and distribution without written permission is prohibited.