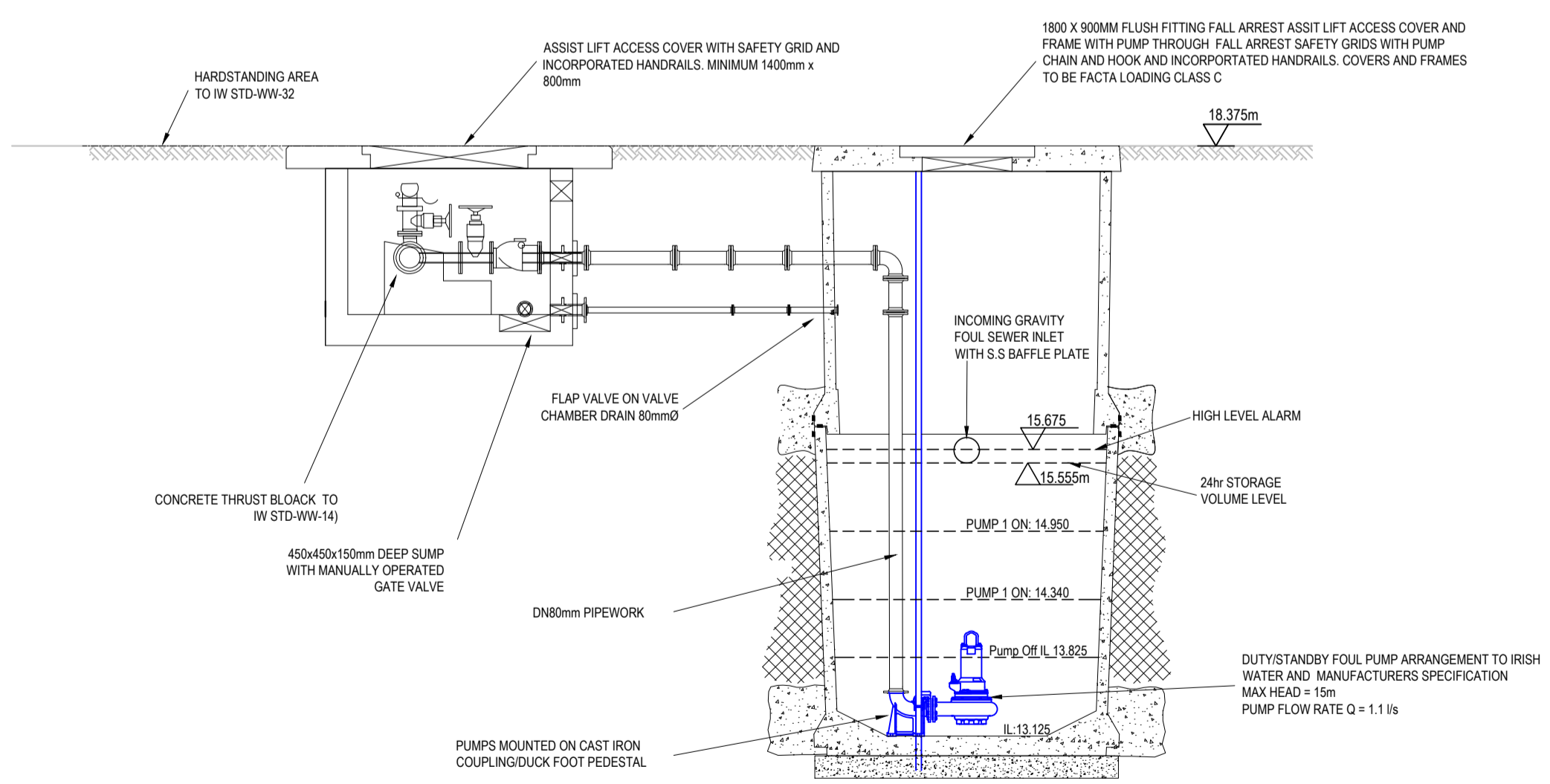
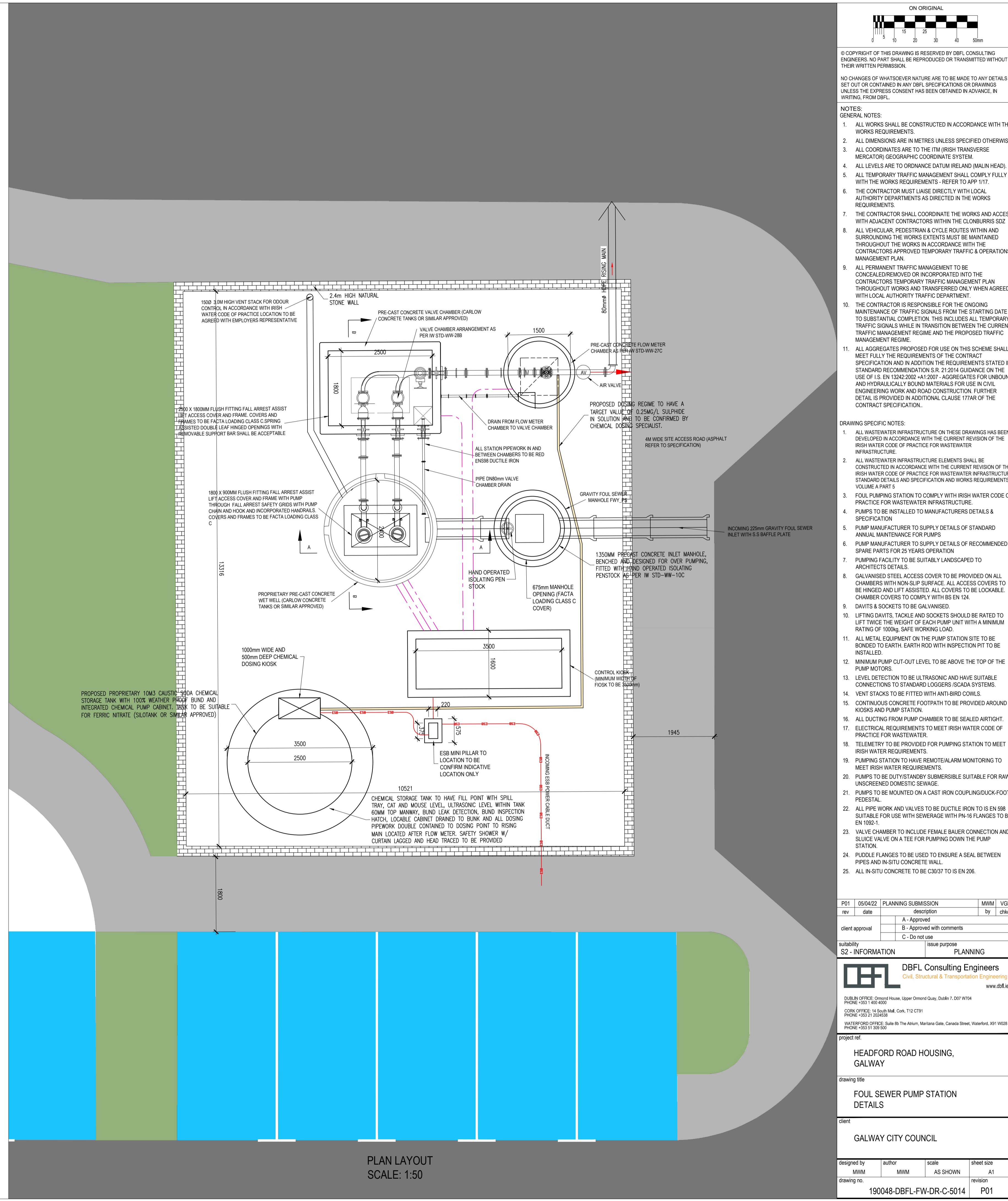


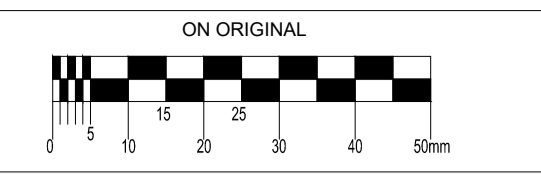
WET WELL/BALANCE TANK SECTION A - A
SCALE 1:50



VALVE CHAMBER /WET WELL SECTION B - B
SCALE 1:50



PLAN LAYOUT
SCALE: 1:50



© COPYRIGHT OF THIS DRAWING IS RESERVED BY DBFL CONSULTING ENGINEERS. NO PART SHALL BE REPRODUCED OR TRANSMITTED WITHOUT THEIR WRITTEN PERMISSION.
NO CHANGES OF WHATSOEVER NATURE ARE TO BE MADE TO ANY DETAILS SET OUT OR CONTAINED IN ANY DBFL SPECIFICATIONS OR DRAWINGS UNLESS THE EXPRESS CONSENT HAS BEEN OBTAINED IN ADVANCE, IN WRITING, FROM DBFL.

- NOTES:
- GENERAL NOTES:
- ALL WORKS SHALL BE CONSTRUCTED IN ACCORDANCE WITH THE WORKS REQUIREMENTS.
 - ALL DIMENSIONS ARE IN METRES UNLESS SPECIFIED OTHERWISE.
 - ALL COORDINATES ARE TO THE ITM (IRISH TRANSVERSE MERCATOR) GEOGRAPHIC COORDINATE SYSTEM.
 - ALL LEVELS ARE TO ORDNANCE DATUM IRELAND (MALIN HEAD).
 - ALL TEMPORARY TRAFFIC MANAGEMENT SHALL COMPLY FULLY WITH THE WORKS REQUIREMENTS - REFER TO APP 1/17.
 - THE CONTRACTOR MUST LIAISE DIRECTLY WITH LOCAL AUTHORITY DEPARTMENTS AS DIRECTED IN THE WORKS REQUIREMENTS.
 - THE CONTRACTOR SHALL COORDINATE THE WORKS AND ACCESS WITH ADJACENT CONTRACTORS WITHIN THE CLONBURRIS SDZ.
 - ALL VEHICULAR, PEDESTRIAN & CYCLE ROUTES WITHIN AND SURROUNDING THE WORKS EXTENTS MUST BE MAINTAINED THROUGHOUT THE WORKS IN ACCORDANCE WITH THE CONTRACTORS APPROVED TEMPORARY TRAFFIC & OPERATIONS MANAGEMENT PLAN.
 - ALL PERMANENT TRAFFIC MANAGEMENT TO BE CONCEALED/REMOVED OR INCORPORATED INTO THE CONTRACTORS TEMPORARY TRAFFIC MANAGEMENT PLAN THROUGHOUT WORKS AND TRANSFERRED ONLY WHEN AGREED WITH LOCAL AUTHORITY TRAFFIC DEPARTMENT.
 - THE CONTRACTOR IS RESPONSIBLE FOR THE ONGOING MAINTENANCE OF TRAFFIC SIGNALS FROM THE STARTING DATE TO SUBSTANTIAL COMPLETION. THIS INCLUDES ALL TEMPORARY TRAFFIC SIGNALS WHILE IN TRANSITION BETWEEN THE CURRENT TRAFFIC MANAGEMENT REGIME AND THE PROPOSED TRAFFIC MANAGEMENT REGIME.
 - ALL AGGREGATES PROPOSED FOR USE ON THIS SCHEME SHALL MEET FULLY THE REQUIREMENTS OF THE CONTRACT SPECIFICATION AND IN ADDITION THE REQUIREMENTS STATED IN STANDARD RECOMMENDATION S.R. 21.2014 GUIDANCE ON THE USE OF IS EN 12422:2002 +A1:2007 - AGGREGATES FOR UNBOUND AND HYDRAULICALLY BOUND MATERIALS FOR USE IN CIVIL ENGINEERING WORK AND ROAD CONSTRUCTION. FURTHER DETAIL IS PROVIDED IN ADDITIONAL CLAUSE 17/AR OF THE CONTRACT SPECIFICATION.

- DRAWING SPECIFIC NOTES:
- ALL WASTEWATER INFRASTRUCTURE ON THESE DRAWINGS HAS BEEN DEVELOPED IN ACCORDANCE WITH THE CURRENT REVISION OF THE IRISH WATER CODE OF PRACTICE FOR WASTEWATER INFRASTRUCTURE.
 - ALL WASTEWATER INFRASTRUCTURE ELEMENTS SHALL BE CONSTRUCTED IN ACCORDANCE WITH THE CURRENT REVISION OF THE IRISH WATER CODE OF PRACTICE FOR WASTEWATER INFRASTRUCTURE STANDARD DETAILS AND SPECIFICATION AND WORKS REQUIREMENTS VOLUME 4 PART 5.
 - FOUL PUMPING STATION TO COMPLY WITH IRISH WATER CODE OF PRACTICE FOR WASTEWATER INFRASTRUCTURE.
 - PUMPS TO BE INSTALLED TO MANUFACTURERS DETAILS & SPECIFICATION.
 - PUMP MANUFACTURER TO SUPPLY DETAILS OF STANDARD ANNUAL MAINTENANCE FOR PUMPS.
 - PUMP MANUFACTURER TO SUPPLY DETAILS OF RECOMMENDED SPARE PARTS FOR 25 YEARS OPERATION.
 - PUMPING FACILITY TO BE SUITABLY LANDSCAPED TO ARCHITECTS DETAILS.
 - GALVANISED STEEL ACCESS COVER TO BE PROVIDED ON ALL CHAMBERS WITH NON-SLIP SURFACE. ALL ACCESS COVERS TO BE HINGED AND LIFT ASSISTED. ALL COVERS TO BE LOCKABLE. CHAMBER COVERS TO COMPLY WITH BS EN 124.
 - DAVITS & SOCKETS TO BE GALVANISED.
 - LIFTING DAVITS, TACKLE AND SOCKETS SHOULD BE RATED TO LIFT TWICE THE WEIGHT OF EACH PUMP UNIT WITH A MINIMUM RATING OF 1000kg, SAFE WORKING LOAD.
 - ALL METAL EQUIPMENT ON THE PUMP STATION SITE TO BE BONDED TO EARTH. EARTH ROD WITH INSPECTION PIT TO BE INSTALLED.
 - MINIMUM PUMP CUT-OUT LEVEL TO BE ABOVE THE TOP OF THE PUMP MOTORS.
 - LEVEL DETECTION TO BE ULTRASONIC AND HAVE SUITABLE CONNECTIONS TO STANDARD LOGGERS/SCADA SYSTEMS.
 - VENT STACKS TO BE FITTED WITH ANTI-BIRD COWLS.
 - CONTINUOUS CONCRETE FOOTPATH TO BE PROVIDED AROUND KIOSKS AND PUMP STATION.
 - ALL DUCTING FROM PUMP CHAMBER TO BE SEALED AIRTIGHT.
 - ELECTRICAL REQUIREMENTS TO MEET IRISH WATER CODE OF PRACTICE FOR WASTEWATER.
 - TELEMETRY TO BE PROVIDED FOR PUMPING STATION TO MEET IRISH WATER REQUIREMENTS.
 - PUMPING STATION TO HAVE REMOTE/ALARM MONITORING TO MEET IRISH WATER REQUIREMENTS.
 - PUMPS TO BE DUTY/STANDBY SUBMERSIBLE SUITABLE FOR RAW, UNSCREENED DOMESTIC SEWAGE.
 - PUMPS TO BE MOUNTED ON A CAST IRON COUPLINGS/DUCK-FOOT PEDESTAL.
 - ALL PIPE WORK AND VALVES TO BE DUCTILE IRON TO IS EN 598 SUITABLE FOR USE WITH SEWERAGE WITH PN-16 FLANGES TO BS EN 1092-1.
 - VALVE CHAMBER TO INCLUDE FEMALE BAUER CONNECTION AND SLUICE VALVE ON A TEE FOR PUMPING DOWN THE PUMP STATION.
 - PUCLE FLANGES TO BE USED TO ENSURE A SEAL BETWEEN PIPES AND IN-SITU CONCRETE WALL.
 - ALL IN-SITU CONCRETE TO BE C30/37 TO IS EN 206.

P01	05/04/22	PLANNING SUBMISSION	MWM	VGE
rev	date	description	by	chkd.
		A - Approved		
		B - Approved with comments		
		C - Do not use		

client approval		
suitability	S2 - INFORMATION	PLANNING

DBFL Consulting Engineers
Civil, Structural & Transportation Engineering
www.dbfl.ie

DUBLIN OFFICE: Ormond House, Upper Ormond Quay, Dublin 7, D07 W074
PHONE: +353 1 400 4000
CORK OFFICE: 14 South Mall, Cork, T12 CT91
PHONE: +353 21 2024538
WATERFORD OFFICE: Suite 10 The Arkun, Maritime Gate, Canada Street, Waterford, X91 W028
PHONE: +353 51 309 500

project ref.
HEADFORD ROAD HOUSING,
GALWAY

drawing title
FOUL SEWER PUMP STATION
DETAILS

client
GALWAY CITY COUNCIL

designed by	author	scale	sheet size
MWM	MWM	AS SHOWN	A1
drawing no.			revision
190048-DBFL-FW-DR-C-5014			P01