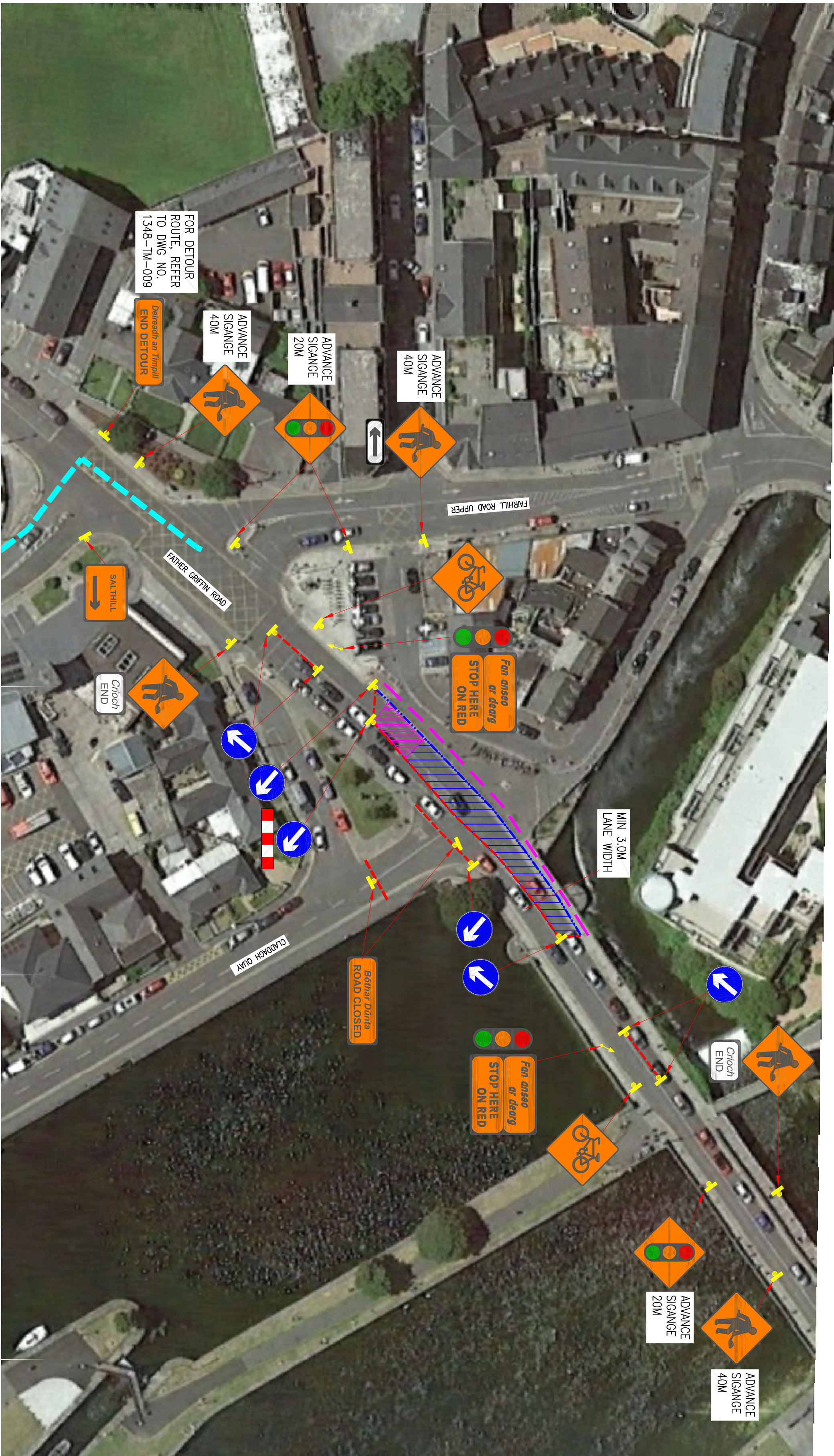


FATHER GRIFFIN ROAD  
SURFACING PHASE A



FATHER GRIFFIN ROAD  
SURFACING PHASE B

- NOTES:
1. All TTM to be as per Table 8.2.2.4 Level 1 (iii)
  2. Site survey to be carried out and signs positioned on lightpoles or existing sign poles to avoid blocking paths.
  3. All diversions routes to be agreed with GCC.
  4. Notification to Gardai, Fire Brigade, Ambulance, Taxi and Bus companies to be carried out in advance of the works.
  5. No signs to block Fire station entrance.
  6. See 1348-TM-009 for Claddagh Quay Diversion route.

Table 8.2.2.4 Minimum Design Parameters for Level 1 (iii) Roads (Single carriageway of 50 km/h)			
Design Parameters	Type A > 15 hours	Type B < 15 hours	Type C < 10 hours
Advance Warning Signage	600	600	-
Stop Sign (m)	50	50	50
Sign Visibility (m)	2	2	2
Number of Signs	2	2	-
Cumulative Distance (m)	40	40	-
Distance between Advance Warning signs (m)	20	20	-
Taper			
Lane Taper Rate <sup>a</sup>	1 in 5	1 in 5	-
Head Shoulder Taper Rate <sup>a</sup>	-	-	-
Cones			
Cone Height (mm)	750	750	-
Cone Spacing (m) <sup>b</sup>	3	3	-
Taper Spacing (m) <sup>b</sup>	3	3	-
Longitudinal Spacing (m) <sup>b</sup>	3	3	-
Lamps (unit area only)	6	6	-
Taper Spacing (m)	6	6	-
Longitudinal Spacing (m)	6	6	-
Safety Zones			
Longitudinal (m)	5	5	-
Lateral (m)	0.5	0.5	-
Lanes	3 (2.5)	3 (2.5)	-
Two-way Roadway Width (m)	5	5	-

LEGEND

- CONES
- LONGITUDINAL SAFETY
- CONSTRUCTION AREA
- PEDESTRIAN ROUTE
- PEDESTRIAN BARRIER

Rev.	Drawn	Chkd.	Apprvd.	Date	Description
0	AP	KB	KB	24/02/23	TENDER ISSUE



Project Title  
EGLINGTON CANAL ACTIVE  
TRAVEL SCHEME

Drawing Title  
TTM LAYOUT  
FATHER GRIFFIN  
ROAD  
SURFACING WORKS

Scale	Date	Drawn by	Rev.
AT A1 NTS AT A3 NTS	24/02/2023	AP	0