



Clifton Scannell Emerson
Associates

Bóthar Stiofáin Cycle Network Scheme

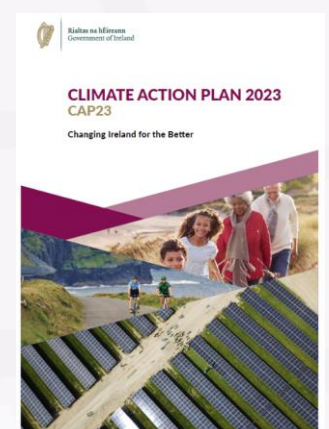
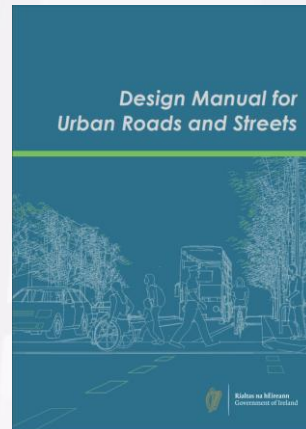
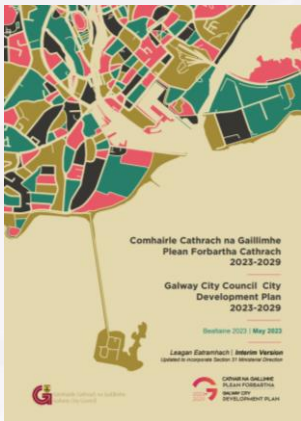
Part VIII Planning Presentation

Monday 13th May 2024

Policy Alignment

Development of the area in line with:

- GCC Development Plan 2023-2029;
- GTS (identified as part of a Primary Network in the Proposed Cycle Network);
- DMURS;
- Cycle Design Manual;
- National Sustainable Mobility Policy;
- Climate Action Plan 2023;
- Safe Routes to School.



Scheme Extents

- 870m approx.
- From the junction with Western Distributor Road at the south to the junction with Rahoona Road at the north.



Objectives

Strategic Objectives



GCC Development Plan 2023-2029

Promote, facilitate and maintain maximum connectivity and permeability for pedestrians and cyclists in the design and management of new public and private projects and in upgrading and retrofitting existing developments



Galway Transport Strategy

To provide a safe and comfortable environment for cyclists in Galway City and the surrounding catchment. The proposals would facilitate increased pedestrian and cycle movement within the city improving connectivity and permeability whilst creating a more attractive, inclusive and vibrant public realm.



National Climate Action Plan 2023

To reduce transport related emissions are set to reduce by 51% by 2030. The CAP23 calls for a significant cut in transport emissions by 2030 in order to meet this sectoral emission ceiling. This includes a 20% reduction in total vehicle kilometres, a reduction in fuel usage, and significant increases to sustainable transport trips and modal share.



Objectives

Route Objectives



Route Development

To develop Bóthar Stiofáin to provide both a utility network (to connect residential, shopping, work and education centres for functional cycle trips) and a recreational network (to provide a route of sufficient length and quality to cater for exercise, social and tourism trips).



Public Transport

To provide for improvements to bus stop infrastructure for the existing bus services along the route.



Community Facilities

To provide improvements for those travelling to Gateway Retail Park, employment hubs, Gaelscoil Mhic Amhlaigh and Galway Bohemians FC.



Other Schemes

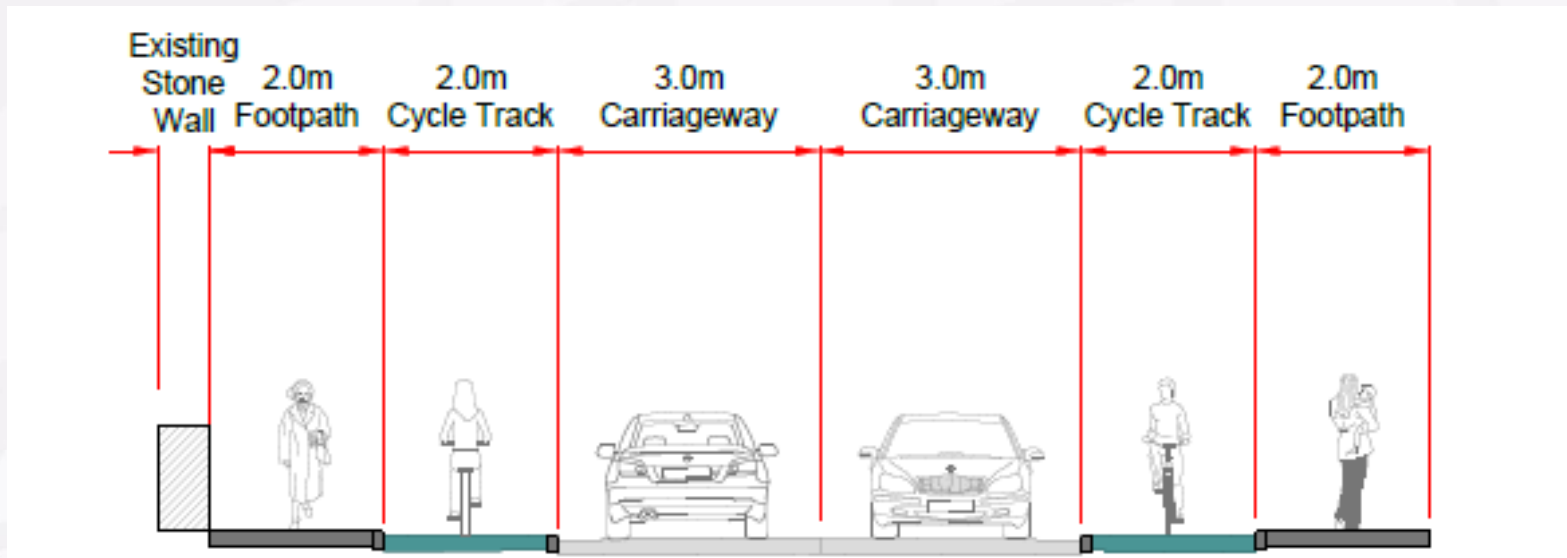
To allow for future tie-ins to adjacent proposed schemes (i.e. the proposed BusConnects Galway and any proposed cycle improvements along Western Distributor Road).



Proposed Scheme

Cross Section

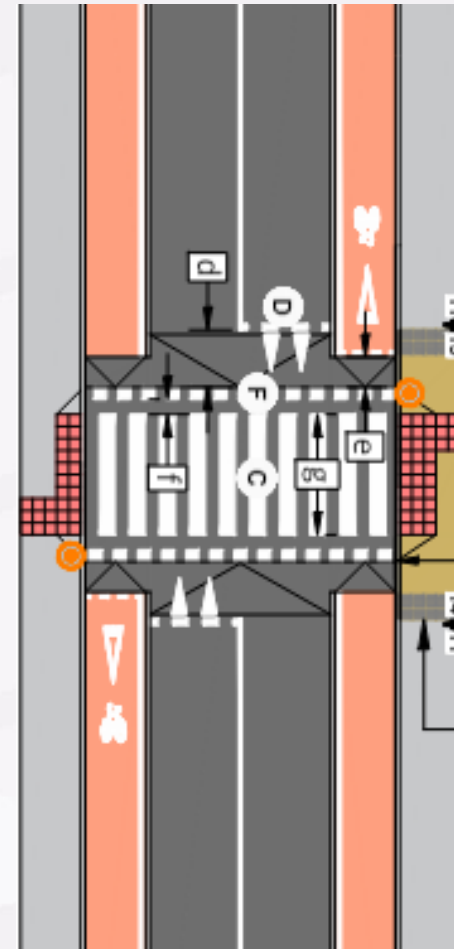
- The proposed scheme involves the provision of a 14m wide cross-section:
 - 2.0m footpath
 - 2.0m cycle track
 - 3.0m carriageway
- Landtake and the north-eastern extent is required to provide continuous active travel facilities
- Verges are maintained/introduced where there is available space



Proposed Scheme

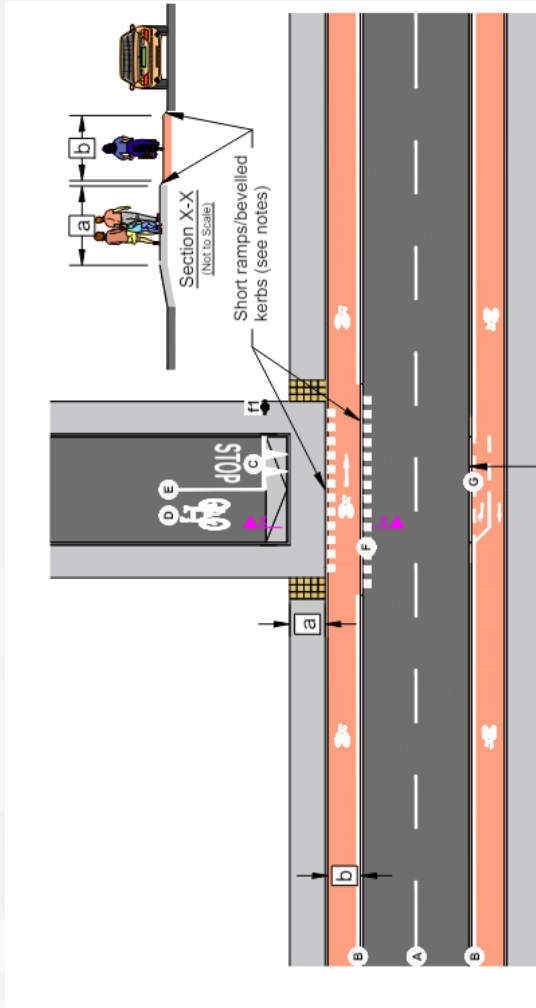
Crossing Facilities

- The existing zebra crossing, at the approach of Bóthar Stiofáin to the roundabout junction with Western Distributor Road, is proposed to be retained.
- 4m wide Combined Zebra to CDM TL605 are proposed at the following approximate locations:
 - South of the junction of Linn Bhuí;
 - At the pedestrian access to RSA Ireland/Aviva;
 - South of drop off area, south of the junction with Riasc Na Rí;
 - South of the junction with Caiseal Úr; and
 - North of the junction with Sliabh Ard.



Proposed Scheme

Ancillary Proposals



- The existing public lighting and services are proposed to be upgraded. 8 no. trees are proposed to be removed with 18 no. trees proposed to be planted
- The scheme will involve limited realignment of the existing carriageway to facilitate the new cycle infrastructure.
- Side Roads improved to pedestrian and cycle friendly specification as per CDM TL405 Stepped Cycle Track Crossing Side Road with Priority
- New road marking and signage.
- Other necessary associated works including improved land-scaping.



Photomontage 1

Existing



Location: Tie-in point at the existing crossing at the Western Distributor Road Roundabout

Proposed



Photomontage 2

Existing



Location: Lidl Entrance

Proposed



Photomontage 3

Existing



Location: Existing crossing at drop-off zone

Proposed



Photomontage 4

Existing



Location: South of Linn Bhuí

Proposed



CPO Process

- 5 landowners, including GCC, have been contacted to inform of procedure and preference to purchase by agreement.
- Engagement is ongoing.



Leaflet Drop

- An information leaflet was distributed to households in the route catchment.

Key Features

- The Bóthar Stiofáin Pedestrian and Cycle Scheme is 870m in length, stretching from the junction with Western Distributor Road at the south to the junction with Rahoona Road at the north. The proposed scheme involves the provision of a 4m wide cross-section with 2m raised adjacent cycle tracks on both sides of the road which will require some landtake from the eastern side.
- The existing zebra crossing, at the approach of Bóthar Stiofáin to the roundabout junction with Western Distributor Road, is proposed to be retained.
- 4m wide raised zebra crossings with red tactile, belisha beacons and flashing amber signals are proposed at an average rate of 1 every 130m along Bóthar Stiofáin, at the following approximate locations:
 - South of the junction of Linn Bhui;
 - At the pedestrian access to RSA Ireland/Aviva;
 - South of drop off area, south of the junction with Riac Na Rí;
 - South of the junction with Caiséal Úr; and
 - North of the junction with Slaibh Ard.

- The existing public lighting and services are proposed to be upgraded. 8 no. trees are proposed to be removed with 18 no. trees proposed to be planted

- The scheme will involve limited realignment of the existing carriageway to facilitate the new cycle infrastructure.

- New road marking and signage.

- Other necessary associated works including improved landscaping.

Share your feedback

Details of the scheme are available on <https://www.galwaycity.ie/Bóthar-Stiofáin-Cycle-Network>

Galway City Council welcomes your support, questions and feedback on the Bóthar Stiofáin Pedestrian and Cycle Scheme proposals.

Post
Planning Department, Galway City Council,
College Road, Galway

Email
planning@galwaycity.ie

Phone
091-536590

All submissions will be considered, and incorporated into the proposed design, where feasible within the design constraints, and beneficial for the scheme.



Bóthar Stiofáin Cycle Network Scheme

Part 8 Submission: Supplementary Booklet

Introduction

Galway City's generally flat topography is conducive to cycling. However, the volume of vehicular traffic on the city streets contributes to an environment that is neither appealing nor perceived as safe for cycling.

The current mode share of cycling in the City is approximately 5%. As is evident with the bus network, and noted within the Galway Transport Strategy (GTS), the existing network of cycle infrastructure is limited and discontinuous.

In order to deal with the ever-growing congestion problem in the city it is important to reduce the number of vehicles entering the city by facilitating access by alternative, more sustainable, modes. As an area of relatively flat topography and a compact city centre, Galway is well suited to cycling as a means of transport.

The overall purpose of the Bóthar Stiofáin Cycle Network Scheme is the delivery of a pedestrian and cycle network on the west side of the city which will provide a safe and attractive active travel route, catering for all users including commuters, leisure and family cycling groups.

Ultimately when the route is delivered, it will improve safety, reduce vehicle speeds, and contribute towards an increased number of trips in the area by pedestrians and cyclists.

This proposal comprising of Bóthar Stiofáin (which is identified in the GTS as a Primary Cycle Route) is now being progressed under Part VIII, Article 81 of the Planning Development Regulations 2001 (as amended).

The Bóthar Stiofáin Cycle Network Scheme is 870m in length, stretching from the junction with Western Distributor Road at the south to the junction with Rahoona Road at the north. The proposed scheme involves the provision of a 4m wide cross-section with 2m raised adjacent cycle tracks on both sides of the road which will require some landtake required from eastern side. Raised zebra crossings at suitable intervals will also be installed.

The route connects residential areas with Galway Retail Park, employment hubs, Gaelscoil Mhic Amhlaigh and Galway Bohemians FC. The route also provides a link to the Western Distributor Road and which has a large employment, educational and retail catchment.

Map Detail



Strategic Objectives

- GCC Development Plan 2023-2029**
Promote, facilitate and maintain maximum connectivity and permeability for pedestrians and cyclists in the design and management of new public and private projects and in upgrading and retrofitting existing developments
- Galway Transport Strategy**
To provide a safe and comfortable environment for cyclists in Galway City and the surrounding catchment. The proposals would facilitate increased pedestrian and cycle movement within the city improving connectivity and permeability whilst creating a more attractive, inclusive and vibrant public realm.
- National Climate Action Plan 2023**
To reduce transport related emissions are set to reduce by 5% by 2030. The CAP23 calls for a significant cut in transport emissions by 2030 in order to meet this sectoral emission ceiling. This includes a 20% reduction in total vehicle kilometres, a reduction in fuel usage, and significant increases to sustainable transport trips and modal share.

Route Objectives

- Route Development**
To develop Bóthar Stiofáin to provide both a utility network (to connect residential, shopping work and education centres for functional cycle trips) and a recreational network (to provide a route of sufficient length and quality to cater for exercise, social and tourism trips).
- Public Transport**
To provide for improvements to bus stop infrastructure for the existing bus services along the route.
- Community Facilities**
To provide improvements for those travelling to Galway Retail Park, employment hubs, Gaelscoil Mhic Amhlaigh and Galway Bohemians FC.
- Other Schemes**
To allow for future tie-ins to adjacent proposed schemes i.e. the proposed BusConnects Galway and any proposed cycle improvements along Western Distributor Road.

Elected Member Consultation

- A drop-in session was held in GCC Chambers on 14/12/2023 with Elected Members in advance of the Part VIII submission (lodged 25/01/2024).
- Councillors were invited to inspect the plans and particulars of the proposed Scheme and discuss with representative from GCC and CSEA.



Statutory Public Consultation

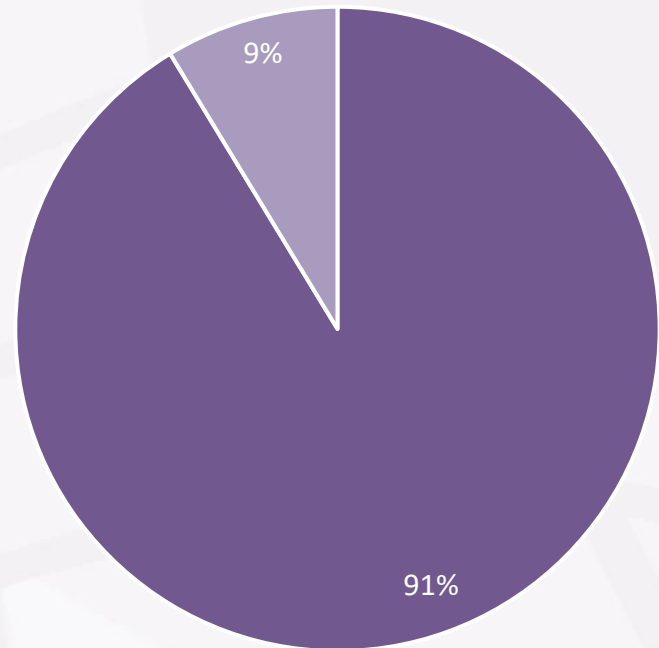
- In accordance with the requirements of Part VIII of the Planning and Development Regulations 2001 (as amended), statutory public consultation was held for a period of **4 weeks from 25th of January 2024** up to and including **23rd of February 2024**.
- Interested persons/organisations were invited to inspect the proposed scheme and provide feedback which could be submitted to either the Planning Office or online.
- The deadline for submissions was 8th of March 2024.



Submissions Received

Breakdown of Submissions Received

- There was a total of 23 no. submissions received from interested individuals/organisations during the consultation period.
- 21 no. submissions (91%) were received from individuals and 2 no. submissions (9%) were received from organisations



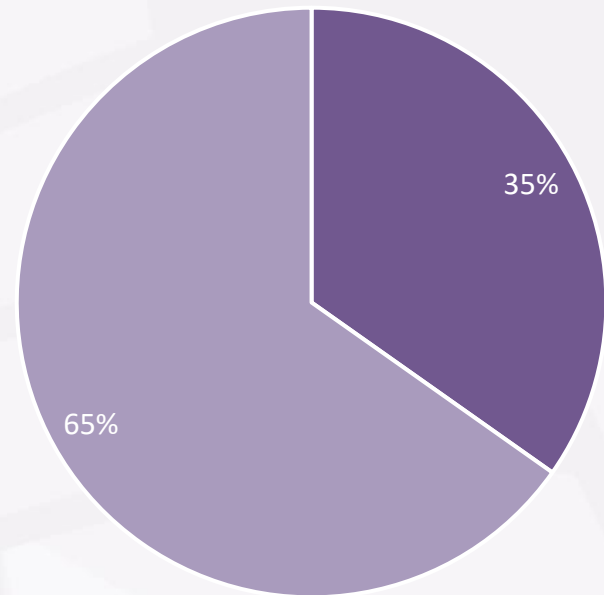
■ Individual ■ Organisation



Breakdown of Submissions Received

Submission by Theme

- 8 no submissions (35%) received related specifically to one element of the Scheme.
- 15 no submissions (65%) received were broader in scope and related to the Scheme as a whole.



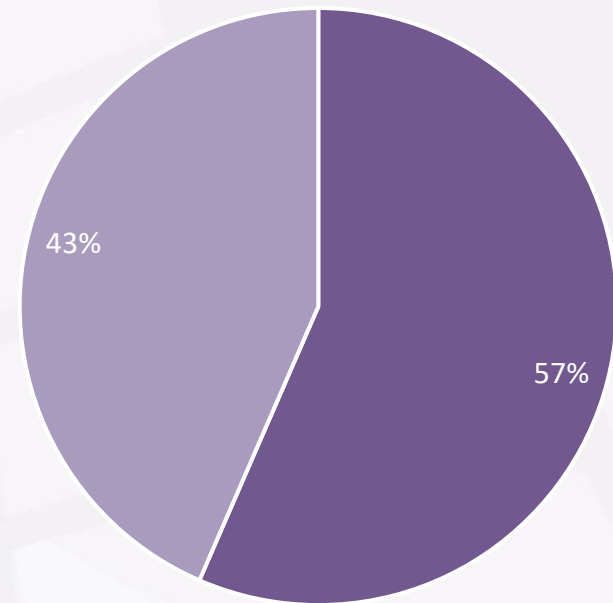
■ Specific ■ Broad



Requests for Removal of the Drop-Off Facility

Submissions that Requested Removal of Drop Off Facility

- 13 no submissions (57%) received requested that the removal of the drop off facility to be included as part of the Scheme.



- Requested Removal of Drop-Off Facility
- Did Not Request Removal of Drop-Off Facility



Requests for Removal of the Drop-Off Facility

- The drop off facility is proposed to be retained as part of the proposed Scheme as it is a condition of planning for the Phase 2 of Galway West District Centre (GCC Planning Ref 08/567). Condition no. 10 of grant of Planning Ref 08/567 dated 08/09/2008, states that *"the crèche shall include provision for a drop in facility to service the short term needs of shoppers at the centre"* with the prescribed reason stated as *"In the interest of the proper planning and sustainable development"*.
- To mitigate conflicts, the drop off area has been moved northwards and the crossing has been moved to before the drop off zone. The drop off zone is designed similar to Cycle Design Manual TL202 Shared Bus Stop Landing Zone.



Recommendations

- The proposed Scheme does not warrant any significant changes consequent to the assessment of the submissions received.
- Any changes/modifications that may arise to the proposed scheme as a result of the public consultation process, do not constitute material changes.
- Therefore, as the substance of the scheme shall remain invariable. Any suggestions can be considered as part of the Detailed Design stage without prejudicing the Part VIII process.



Advantages of the Scheme

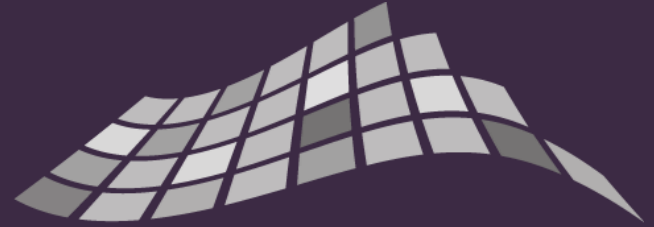
- Provision of continuous pedestrian facilities and cycle facilities throughout with reduced crossing delays and additional crossing points;
- Improved landscaping throughout will contribute to an enhanced 'people first' public realm and remediation of the current 'car centric' environment;
- Significant improvement for active travel modes to stimulate mode shift, particularly for students at Gaelscoil Mhic Amhlaigh;
- Provides a corridor to the increasingly walkable and cyclable West End of the city;
- Traffic calming in the form of reduction in carriageway width, reduction in junction radii and an increase of crossings;
- Development of the area in line with GCC Development Plan, GTS, DMURS National Sustainable Mobility Policy, Climate Action Plan 2023 and Safe Routes To School.



Next Steps

- On condition of grant of Part VIII planning approval, the Scheme will Progress to Phase 5 Detailed Design and Procurement Stage of the Scheme as per the NTA PAG.
- CPO process is ongoing, with a view to lodge following Council Approval.





Clifton Scannell Emerson
Associates

