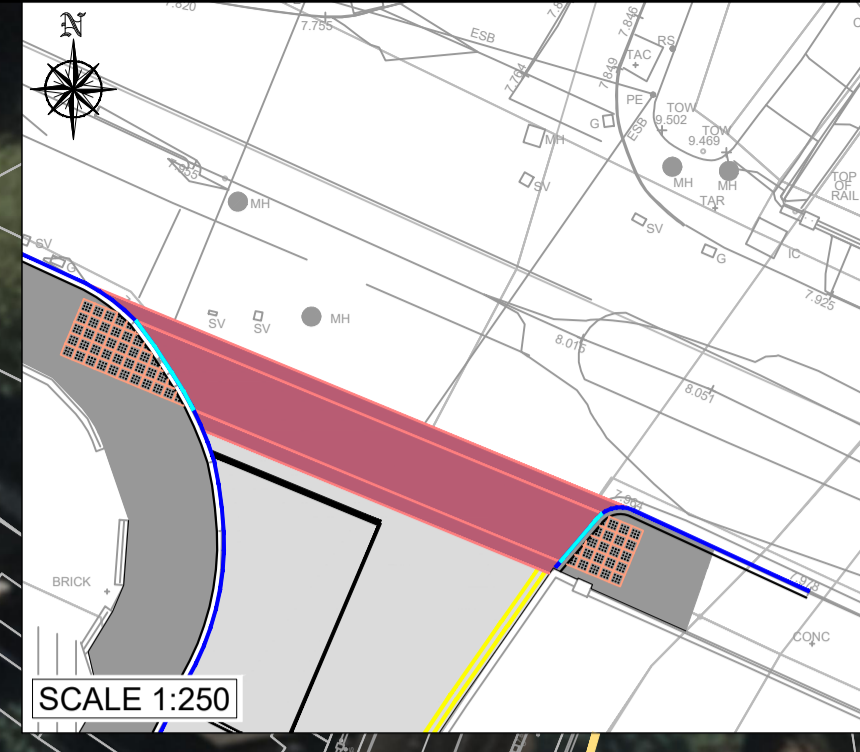


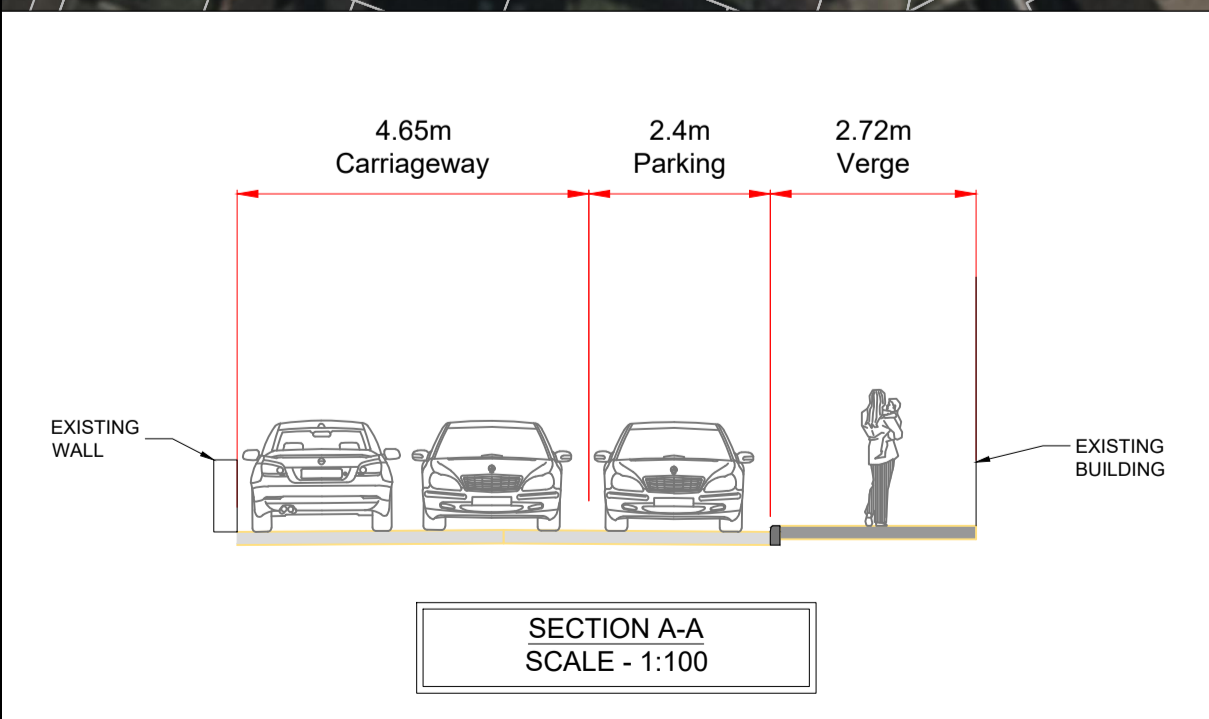
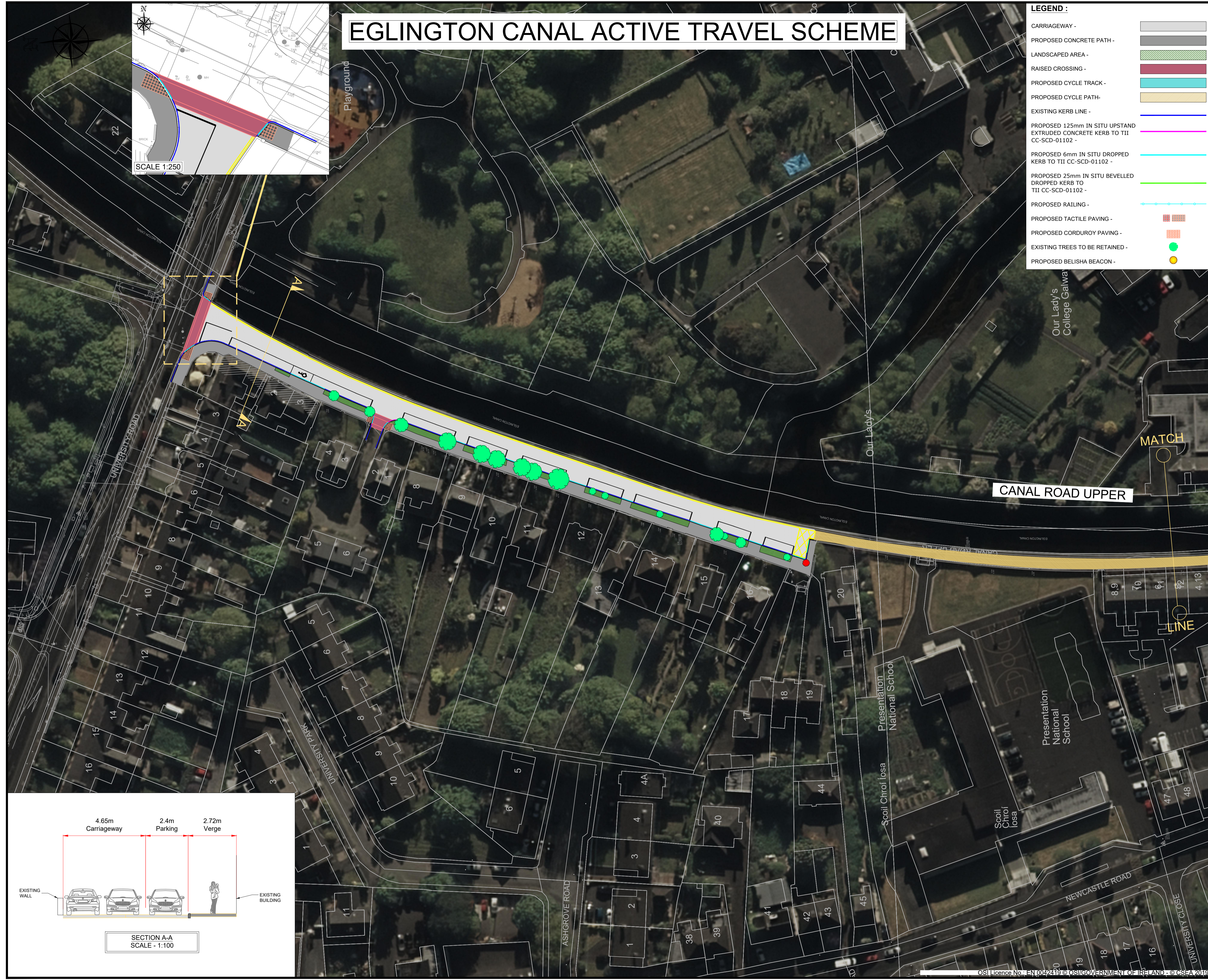
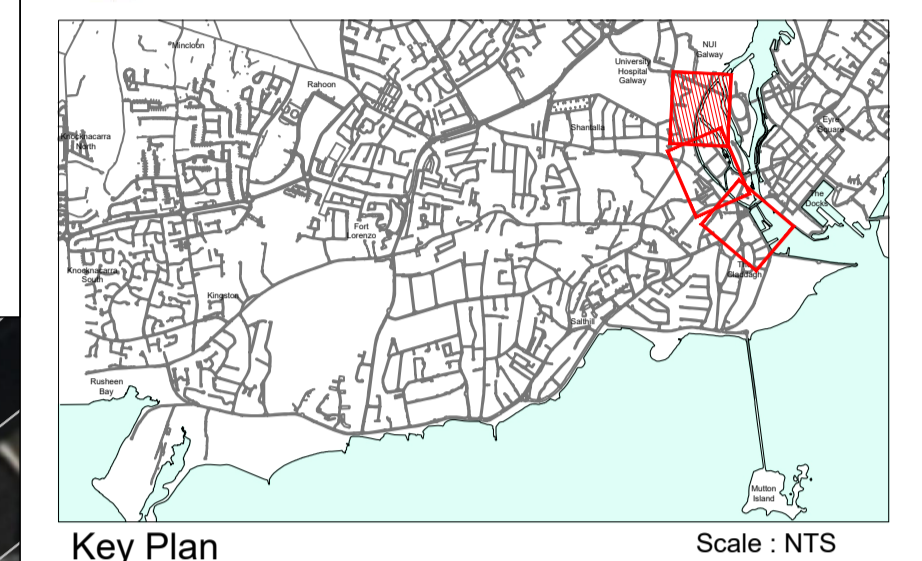
EGLINGTON CANAL ACTIVE TRAVEL SCHEME



LEGEND :

- CARRIAGEWAY -
- PROPOSED CONCRETE PATH -
- LANDSCAPED AREA -
- RAISED CROSSING -
- PROPOSED CYCLE TRACK -
- PROPOSED CYCLE PATH -
- EXISTING KERB LINE -
- PROPOSED 125mm IN SITU UPSTAND EXTRUDED CONCRETE KERB TO TII CC-SCD-01102 -
- PROPOSED 6mm IN SITU DROPPED KERB TO TII CC-SCD-01102 -
- PROPOSED 25mm IN SITU BEVELLED DROPPED KERB TO TII CC-SCD-01102 -
- PROPOSED RAILING -
- PROPOSED TACTILE PAVING -
- PROPOSED CORDUROY PAVING -
- EXISTING TREES TO BE RETAINED -
- PROPOSED BELISHA BEACON -

DRAWING IS PRODUCED USING THE IRISH TRANSVERSE MERCATOR (ITM) GEOGRAPHIC COORDINATE SYSTEM **A1**



Rev	Description	Drawn	Checked	Date
P01	FOR DISCUSSION	-	-	-

Clifton Scannell Emerson Associates
 Clifton Scannell Emerson Associates Limited
 Consulting Engineers,
 Snaifort Lodge,
 Castledawson Avenue,
 Blackrock, Co. Dublin,
 Ireland, A94 P768
 T: +353 1 288 5006
 F: +353 1 283 3466
 E: info@csea.ie
 W: www.csea.ie

COMHAIRLE CATHRACH NA GAILLIMHE
 GALWAY CITY COUNCIL

GALWAY CYCLE NETWORK
 STAGE 2

PUBLIC ENGAGEMENT DRAWING
 PROPOSED CANAL ROAD

Drawn By: MR Date: 20.05.21
 Checked By: CB Scale: 1:500 @ A1

Project Code: Originator: Zone/Phase: Level: Type: Role: Dwg. No.
19_151 - CSE - GEN - XX - DR - C - 2132

S2 FOR INFORMATION
 Status Code: Suitability Description

P01 PRELIMINARY
 Revision: Project Status